

P & S Consultants, LLC.

ARCHITECTURE ENVIRONMENTAL ENGINEERING MANAGEMENT

COMMERCIAL CAPABILITY STATEMENT

Business Summary

P&S Consultants, LLC is a consulting firm which provides engineering, architecture, environmental and management services. The company was created in 2002 from the fusion of the private practices from its founders. P&S Consultants, LLC. tailors its services to the specific needs of its clients. Our participation ranges from small, specialized studies to complete project development.

1. A/E site design, permitting, and construction observation services for a 15-acre commercial shopping center, including road modifications, stormwater management, and new parking areas.

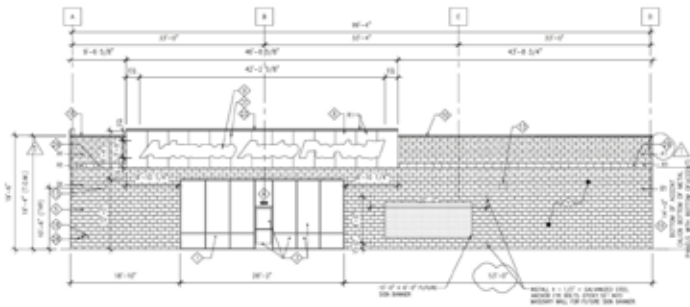
2. A/E design services for the development of a retail facility, including site planning, utility coordination, electrical distribution, and parking layout.

3. A/E design services for a 40,000 sq. ft. retail stores, including life safety planning, accessibility compliance, and coordination of architectural and MEP systems.

4. Design for the rehabilitation of an existing maritime crane into a public food court and plaza, including kiosks, seating areas, pergolas, and supporting amenities. CDBG-MIT funding.



1. **Doramar Plaza** - Dorado, PR
2015



2. **Auto Parts** - Multiple Locations, PR
2016



3. **Department Store** - Multiple Locations, PR
2023



4. **Varadero Food Court** - Culebra, PR
2026

Core Capabilities:

- Architectural design and master planning
- Civil, structural, and MEP engineering
- Site development and stormwater management
- Environmental design, permitting and compliance
- Rehabilitation and as-built documentation
- Project management and construction administration

Experience:

Pedro Lorenzo, PE, BCEE – President

Environmental engineer with over 30 years of experience in environmental engineering, project permitting, and project management.

Samuel Pérez, PE, AIA, PMP, SOI – Vice President

Architect and civil engineer with over 30 years of experience in the development and design of civil and architectural projects throughout the United States.

Contact:

Pedro Lorenzo, PE, BCEE

admin@psconsultantspr.com

B5 calle Tabonuco, Ste 216,
PMB 328, Guaynabo, PR
00968-3029

Tel. 787.783.1436

www.psconsultantspr.com

Certifications:

NAICS
236210 541330
541420 236220
541340 541430
561110 541350
541620 541310
541410 926150

- DBE
- MBE
- SBA 8(a)

DUNS NUMBER
186148552

CAGE CODE
36125

UEI
LDKXVM8PQKT5

Availability:



Immediate availability in:
PR, FL & USVI