

P & S Consultants, LLC.

ARCHITECTURE ENVIRONMENTAL ENGINEERING MANAGEMENT

INDUSTRIAL & HOSPITAL

CAPABILITY STATEMENT

Business Summary

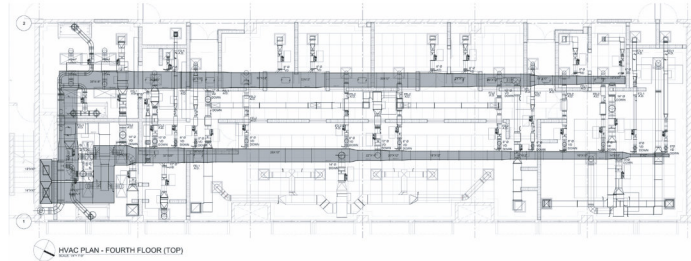
P&S Consultants, LLC is a consulting firm which provides engineering, architecture, environmental and management services. The company was created in 2002 from the fusion of the private practices from its founders. P&S Consultants, LLC. tailors its services to the specific needs of its clients. Our participation ranges from small, specialized studies to complete project development.

1. Full A/E services for the reconfiguration of existing floors to create laboratory facilities. Detailed design of medical gas systems installation and associated accessory facilities, including supporting infrastructure required for system operation.

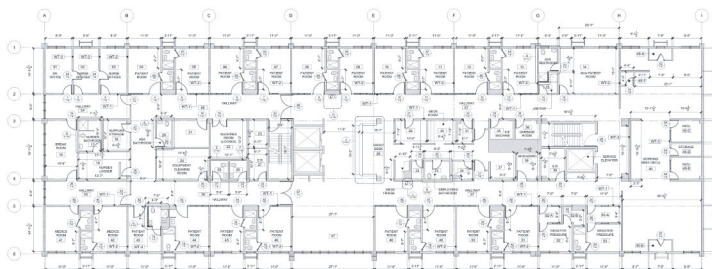
2. Provided full multidisciplinary A/E services for multiple buildings at Hospital Comunitario Buen Samaritano, including technical studies, structural and environmental evaluations, development of phased operation and maintenance strategies during design, permitting (EQB, OGP, DNER), and preparation of FEMA-funded Design Development Documents (DDD).

3. Provided design, inspection, permitting, and management services for loading docks, boiler rooms, cleanrooms, packaging offices, cooling tower platforms, and new office spaces, including technical support throughout construction and inspection phases.

4. Civil, architectural, structural, mechanical, and electrical design and permitting for facility expansions and interior reconfiguration, including additions for workspace, storage, restrooms, and cleanroom support spaces. Scope included evaluation of sustainable materials, detailed design of medical gas systems and associated accessory facilities, and technical support during construction and inspection.

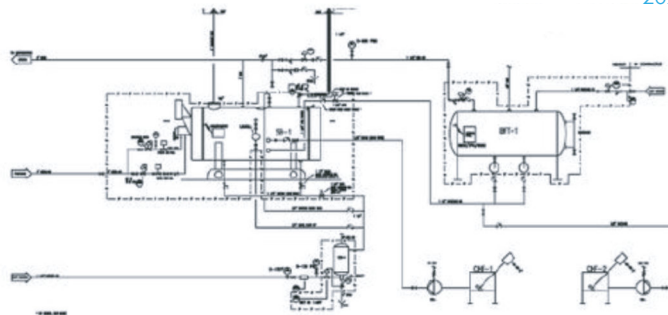


1. UPR School Of Pharmacy/Laboratory - San Juan, PR 2025

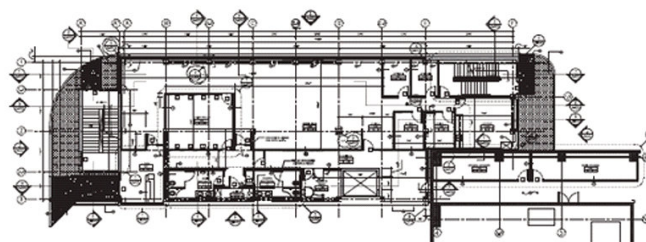


2. Hospital Buen Samaritano - Aguadilla, PR 2025

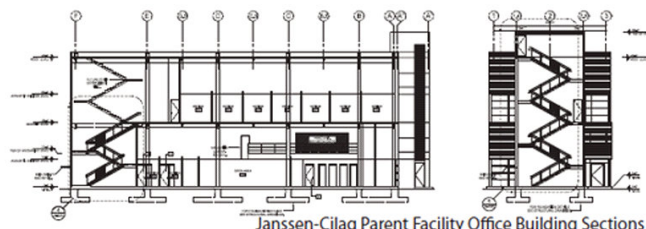
MAIN BUILDING PROPOSED SIXTH LEVEL FLOOR PLAN



3. Pall Corporation - Fajardo, PR 2017



Janssen-Cilag Parent Facility Office Building Floor Plan



Janssen-Cilag Parent Facility Office Building Sections

4. Janssen - Gurabo PR 2013

Core Capabilities:

- Architectural design and master planning
- Civil, structural, and MEP engineering
- Site development and stormwater management
- Environmental design, permitting and compliance
- Rehabilitation and as-built documentation
- Project management and construction administration

Experience:

Pedro Lorenzo, MSA, PE, BCEE – President

Environmental engineer with over 30 years of experience in environmental engineering, project permitting, and project management.

Samuel Pérez, PE, AIA, PMP, SOI – Vice President

Architect and civil engineer with over 30 years of experience in the development and design of civil and architectural projects throughout the United States.

Contact:

- Pedro Lorenzo, PE, BCEE
- admin@psconsultantspr.com
- B5 calle Tabonuco, Ste 216, PMB 328, Guaynabo, PR 00968-3029
- Tel. 787.783.1436
- www.psconsultantspr.com

Certifications:

NAICS	• DBE
236210 541330	• MBE
541420 236220	• SBA 8(a)
541340 541430	
561110 541350	
541620 541310	DUNS NUMBER
541410 926150	186148552
CAGE CODE	UEI
36125	LDKXVM8PQK75

Availability:

Immediate availability in: PR, FL & USVI

